

MediaStar Pro has been developed to meet the demand for versatile CATV, Television and A/V delivery. Its powerful management software, flexibility and expandability make it the perfect solution for many different environments.

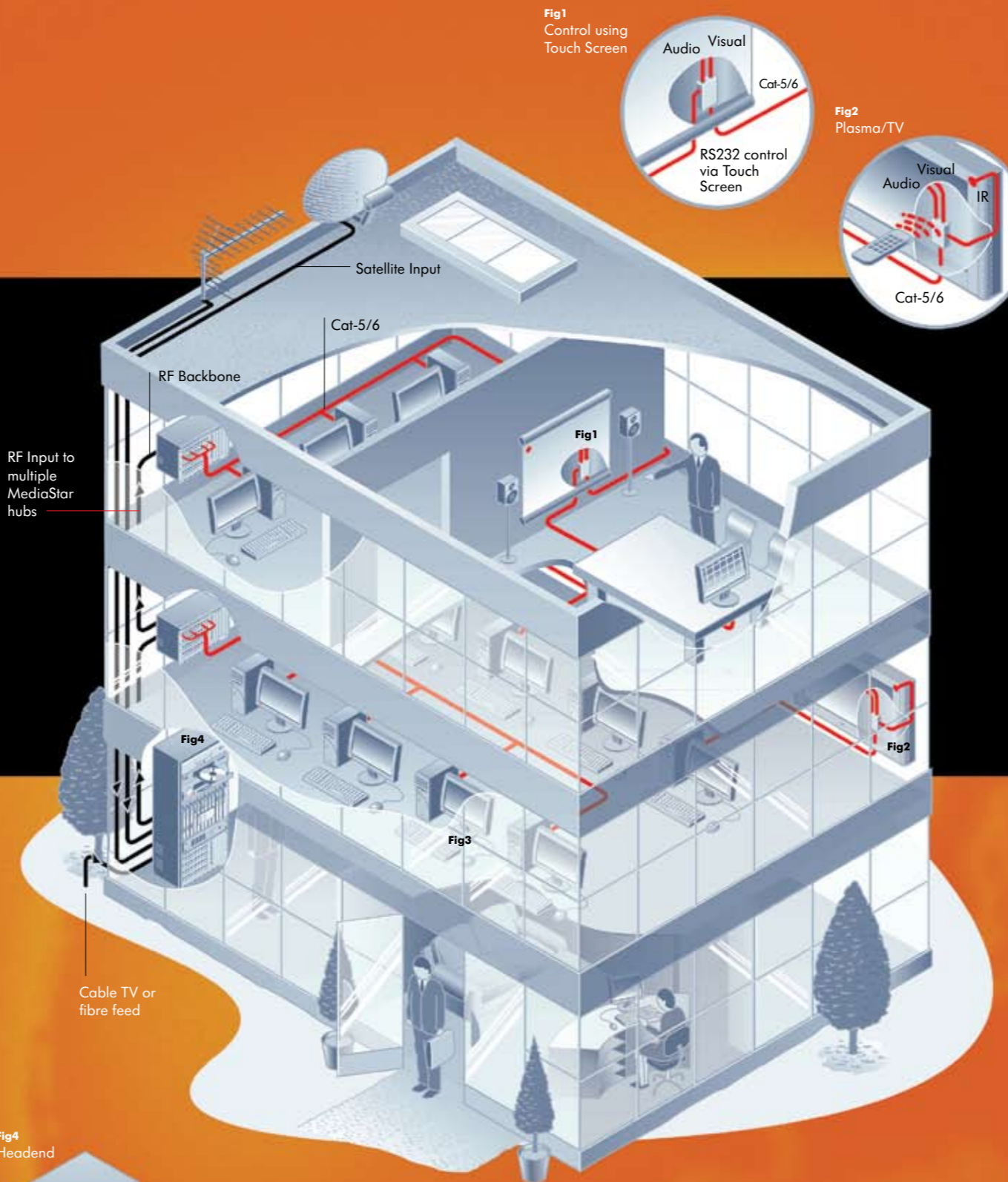


Fig1 Control using Touch Screen

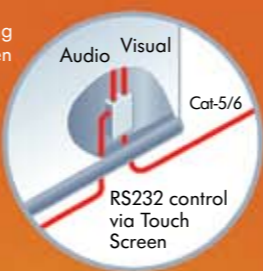


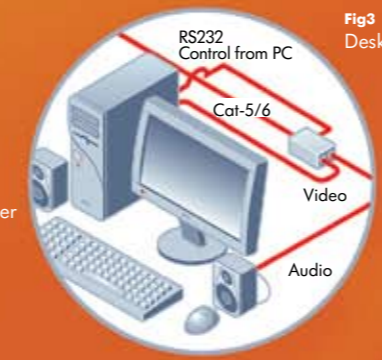
Fig2 Plasma/TV



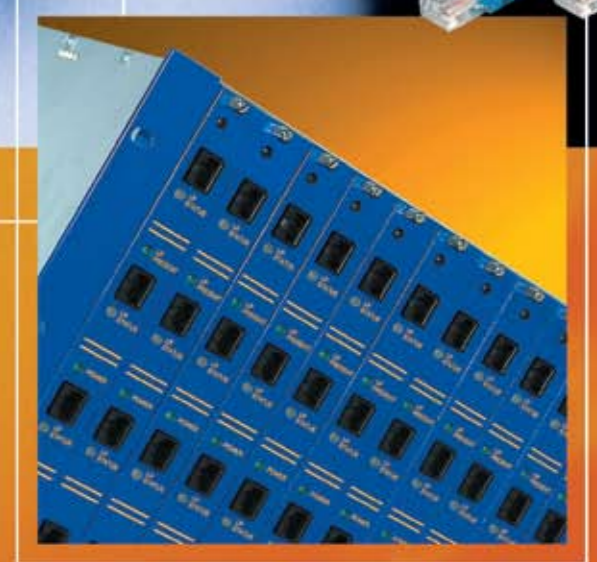
Fig4 Headend



Fig3 Desktop TV



Managed TV and video delivery systems



The unique way to distribute and manage video services via CAT-5/UTP cabling infrastructure

MediaStar Pro main features...

- 180/200 TV Channel Capacity
- Zero LAN impact
- No video/audio latency
- Unlimited users per system
- Use existing CAT-5/6 infrastructure
- Total control of all users viewing rights
- SNMP Monitoring
- IP control
- Scalable deployment
- Route IR from third party remotes (38kHz)
- PAL/NTSC

Trading Floors

Keeping in touch with the latest financial news or world events is vital in today's modern financial trading room. Satellite and CATV channels such as CNN, CNBC and Sky News are broadcast through the Cat-5/6 cabling. Timed delivery of individual channels allows Analysts' broadcasts to be delivered to selected TVs or PCs.

Corporate Offices

MediaStar Pro is able to deliver a uniform corporate message from the CEO and distribute breaking news to multiple large screen displays and PC workstations simultaneously. Larger organisations can add to their system simply by looping together MediaStar Pro hubs and adding users. The addition of users has no impact on the LAN.

Education

Universities, colleges and schools use MediaStar Pro connected to their structured cabling system to deliver lectures and educational material, live or from tape or server to any number of screens in different classrooms throughout the building.

Sports Stadia

Networking a large number of displays through the MediaStar Pro system, a sports stadium is able to select and control delivery of information to different areas depending on the audience. So, during a match, coverage can be displayed throughout the stadium, but at a seminar, the screens can be used to display archived footage on VHS or DVD.

Leisure and Retail

Deliver video and audio from a variety of content sources. So a Shopping Mall, Health club or Sports Bar could show live football from a satellite channel on selected screens whilst at the same time displaying music TV, news or advertising on other screens. Control is entirely in the operator's hands.

Hotels and Hospitality

Computer presentations, product promotions or messages can be delivered to a wide variety of display devices. Hotels may welcome guests with messages on a Plasma screen in the foyer, whilst the hospitality suite at a racecourse may prefer to combine live racing coverage on the TV screen with a promotional presentation.

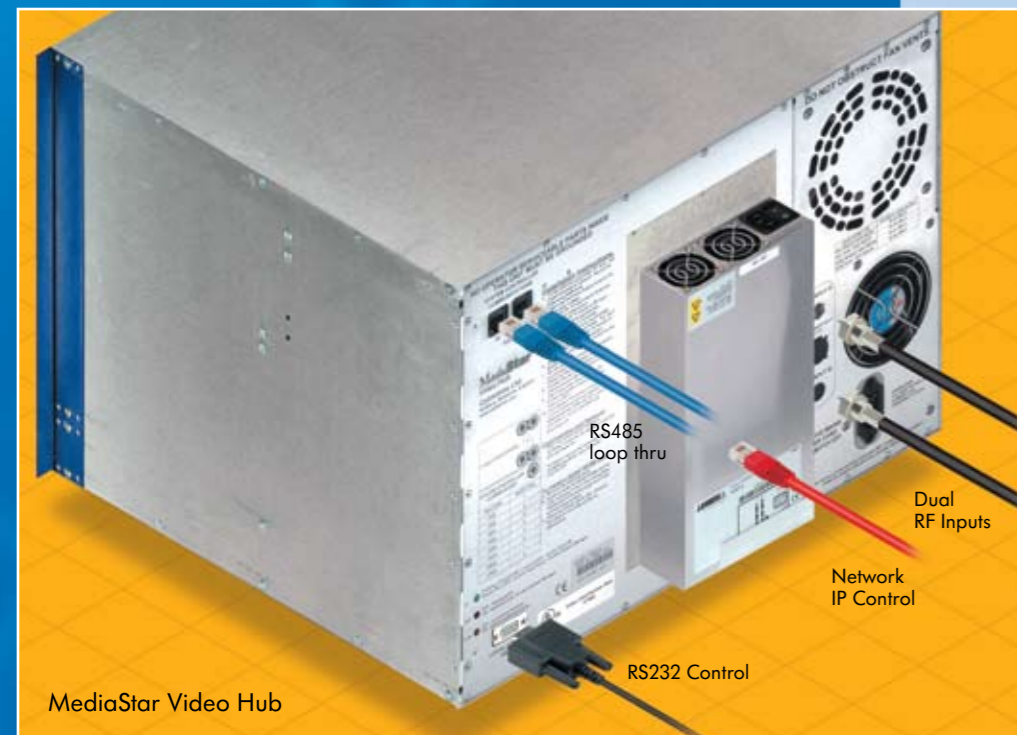
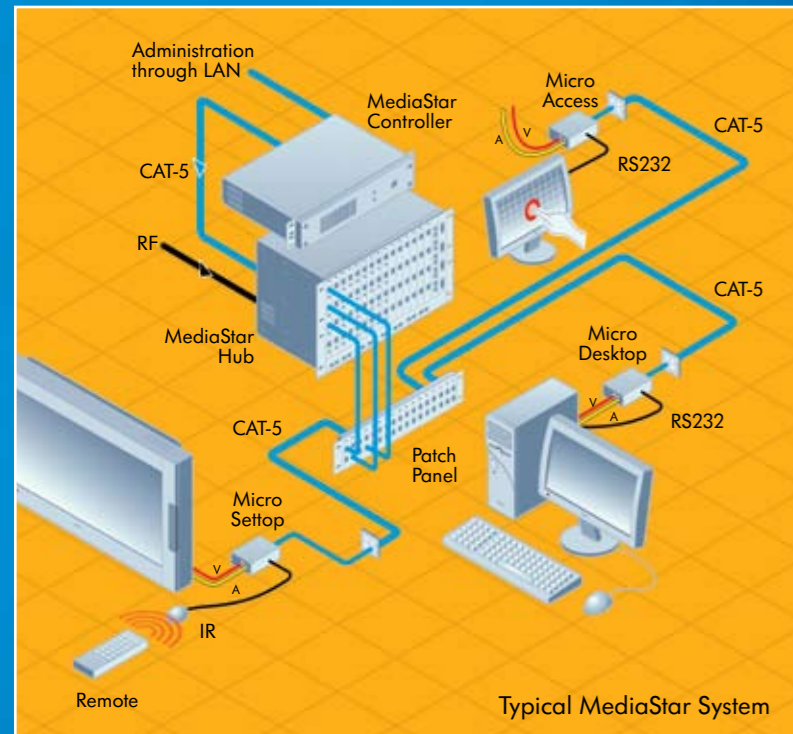
MediaStar Pro

Cabletime Limited 64 Greenham Road Newbury Berkshire RG14 7HX United Kingdom
www.cabletime.com email: sales@cabletime.com Telephone +44 (0)1635 35111
Cabletime USA 973 288 8010 email: usa@cabletime.com Cabletime Asia +852 3101 2650 email: asia@cabletime.com

MediaStar Pro

MediaStar Pro

...is the ultimate answer to Cat-5/UTP audio and video delivery. Scalability, a powerful feature set and a comprehensive software management suite make this the only professional solution for large corporate applications.



Deploy Video Hubs

Deploy MediaStar Pro video hubs around a fibre/coax RF Backbone. Design systems with multiple video hubs co-located or geographically dispersed to create large systems with virtually unlimited users and end points.

Each 7u rack mountable hub will provide a full TV/AV service to 64 individual end points.

Take Control

Use IP, RS232 or RS485 Hub connectivity to facilitate hub configuration, control and monitoring from the remote MediaStar administration program.

Connect a host of input devices

An RF Headend combines incoming satellite signals and MATV/CATV feeds with local content from antennas, decoder units, cameras, DVDs and VCRs to form an RF backbone for distribution to the MediaStar video hubs.

Hook Up the RF Backbone

Single or Dual RF inputs enable TV capacity of up to 200 NTSC or 180 PAL channels.

Add User Cards

Up to 16 hot swappable Quad User Cards, each supporting 4 independent end points can be accommodated in each hub.

Roll Out Users

Front panel RJ45 sockets allow interconnection with MediaStar Pro receiver units (Micros, Settops and Desktops) at distances of up to 800 meters (2,600ft) via the installed Category 5/UTP four pair structured cabling system.

Output to any device

Deliver baseband video and audio to plasma screens, projectors, TV's and PC workstations. Line powered MediaStar Micro Settops and Desktops can be connected to the video hub at a distance of up to 800m (2,600ft) via an installed Category 5/6 four pair structured cabling system.

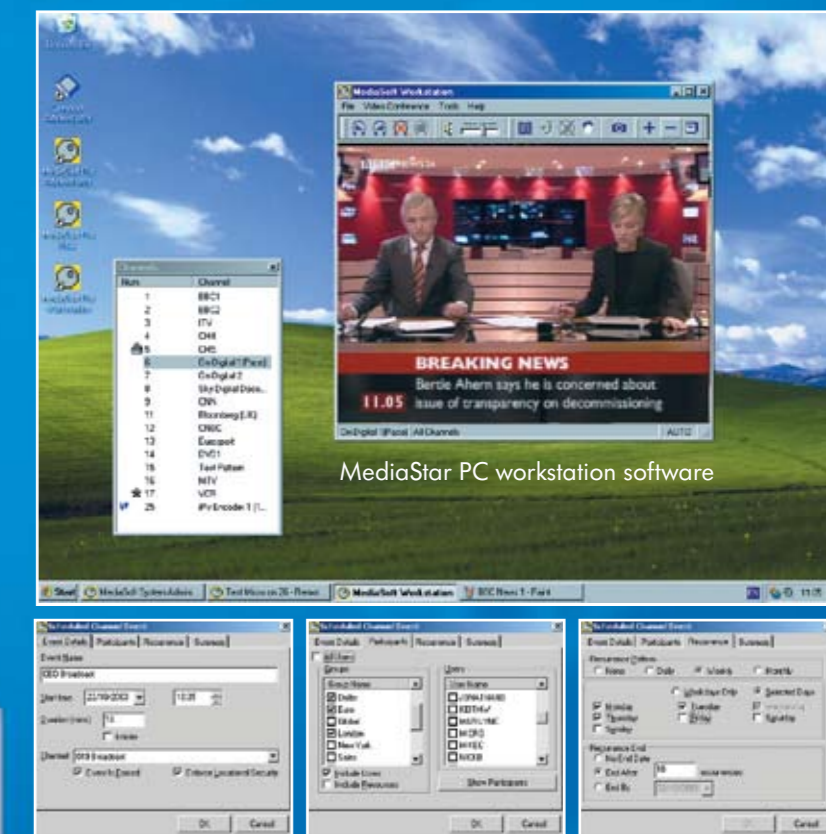
Intuitive use

Viewer control of the Mediastar Pro Settop/Desktop units is with either an infrared handset or by RS232 with a touch screen or PC workstation. Viewers can channel select and adjust volume, assisted by an on screen or LCD capability or PC application.

MediaStar Micro IR Settop/RS232 Desktop

Desktop TV

MediaStar Workstation software enables PC based users access to the MediaStar Pro video network. Users can select TV channels and adjust audio levels.



Setting up a Scheduled Event

Manage and Control Users and Content

Give viewing access and system privileges to individual users, groups of users or globally. Accord access security by user, location or content. Enable and disable broadcast rights. Set up timed events and push remote channel changes. Use viewing records for cost centre assignment. Utilise SIPI to allow system sub administration from remote touch screens. Use SNMP monitoring and diagnostic functions to assist in installation and ongoing maintenance.

MediaStar Pro...
The Professional choice for managed multi-channel TV and AV delivery

For more technical information please visit www.cabletime.com