

PROJECTOR LIFTS

- we don't want you to see us.

To think of...

Some issues need to be taken under consideration before choosing your projector lift. As a guide to help you find the best solution for your individual use, we have listed the most common and important questions below.

How large is the projector I will use?

To select the correct model, ensure the size and weight of projector before choosing your lift.

How far must the projector need to descent into the room?

Generally the projector's lens should be at the same height as the top of the screen's viewing area, but verify the exact position of the projector with the specification of your projector. Lens shift on projector gives you more options!

How much space do I have left above the ceiling?

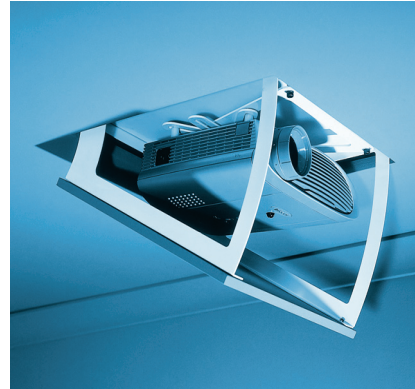
Space will be needed for height of lift, projector mount, projector and closure panel, plus allowance for installation hardware and workspace.

Am I dealing with acoustical tile or drywall ceiling?

A ceiling access door is recommended when installing in ceilings without access to the top of the lift.

Is the available space above the ceiling a plenum air return?

Most commercial type installation will require a housing.



Photography ©Scott Arthur

The Hero™ lift has a sophisticated appearance.

Euroscreen® expands the range in Audio Video products and is offering video projector lifts. The projector lifts keep the projector hidden when it is not in use, which offers both the advantage of a sophisticated appearance and the benefit of prevention of theft and damage to the projector. The projector lifts are obtainable as motorised video projector lifts which are all design to help you mount the projector of your choice at or above the ceiling line. Additionally to projectors, the lifts can also be used to recess speakers, security cameras, video conferencing cameras etc. For full advantage of Euroscreen® concealing design concept please also learn more about Sesame™ projection screen and Commander Control System™ (www.bjurab.se).

The Hero™ lift

Completely concealed above the ceiling when not in use, the Hero™ reveals its location and the projector housed within quickly and quietly when required. A trapdoor lowers the projector quickly and silently using a precision actuator. The Hero™ lift is delivered with a universal bracket which allows installation of a variety of projectors models and ceiling closure panel. For optimal fit depending on the size of the projector, you will find the Hero™ lift in two models, SMALL and LARGE (not in stock), and housing, which provides prevention from theft and dust, is optional.

- projector descends when required to a pre-set position
- light path is directly to the screen with no loss in output
- fine-tuning of tilt position and limit setting during installation is easy
- wall switch to control descent and raise included
- projector size up to 20 cm (high) x 40 cm (depth) = SMALL (maximum width 33 cm)
- projector size from 20 to 28 cm (high) x from 40 to 43 cm (depth) = LARGE (maximum width 43 cm)

Dimensions & Data for Hero™ (nominal)	SMALL	LARGE (not in stock)
Overall size (W x L x H).....	64 x 40 x 36 cm	83 x 50 x 43 cm
Ceiling cutout size (W x L)	40 x 40	50 x 50
Net weight of unit.....	8 kg	12 kg
Lifting capacity.....	12 kg	12 kg
Maximum projector width*	33 cm	43 cm
Control options (SMALL and LARGE)	Wall switch, IR, RF or RS232 codes	

* Room for cable inputs must be considered along with projector width and depth.

