

PROJECTOR LIFTS

- we don't want you to see us.

To think of...

Some issues need to be taken under consideration before choosing your projector lift. As a guide to help you find the best solution for your individual use, we have listed the most common and important questions below.

How large is the projector I will use?

To select the correct model, ensure the size and weight of projector before choosing your lift.

How far must the projector need to descent into the room?

Generally the projector's lens should be at the same height as the top of the screen's viewing area, but verify the exact position of the projector with the specification of your projector. Lens shift on projector gives you more options!

How much space do I have left above the ceiling?

Space will be needed for height of lift, projector mount, projector and closure panel, plus allowance for installation hardware and workspace.

Am I dealing with acoustical tile or drywall ceiling?

A ceiling access door is recommended when installing in ceilings without access to the top of the lift.

Is the available space above the ceiling a plenum air return?

Most commercial type installation will require a housing.



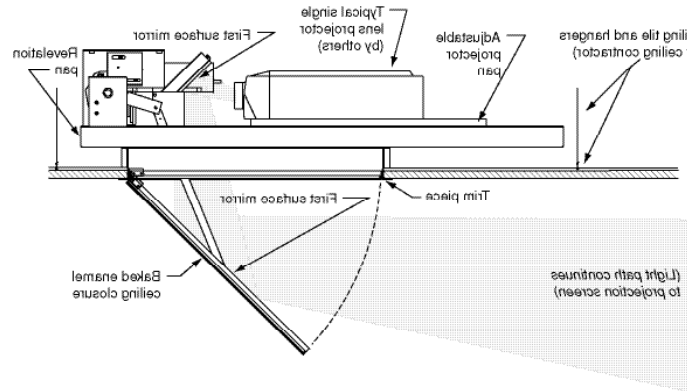
The Mirro™ is equipped with a clever mirror system where the projector is hidden above the ceiling.

Euroscreen® expands the range in Audio Visual products and is offering video projector lifts. The projector lifts keep the projector hidden when it is not in use, which offers both the advantage of a sophisticated appearance and the benefit of prevention of theft, and damage to the projector. The projector lifts are obtainable as motorized video projector lifts which are all design to help you mount the projector of your choice at or above the ceiling line. Additionally to projectors, the lifts can also be used to recess speakers, security cameras, video conferencing cameras etc. For full advantage of Euroscreen® concealing design concept please also learn more about Sesame™ projection screen and Commander Control System™ (www.bjurab.se).

The Mirro™ lift

The projector unit is mounted above the ceiling, with the image directed through a clever mirror system onto the screen. The lower mirror even closes automatically when the projector is not in use, completely concealing the projector installation. For optimal fit depending on the size and weight of the projector, you will find the Mirro™ lift in two models, SMALL and LARGE (not in stock). The housing is optional.

- installation reduces noise level from projector into the room
- two highly reflective 10 mm thick glass mirrors direct the projected image onto the screen
- mirrors are coated on the front surface for minimal light loss and no distortion
- use optional frame kit in other applications, for example plaster and wood ceilings



| Dimensions & Data for Mirro™ (nominal) | SMALL | LARGE (not in stock) |
|--|---------------------|----------------------|
| Overall unit size (H x W x L)..... | 33 x 97 x 87 cm | 33 x 97 x 112 cm |
| Required space above ceiling*..... | 34 x 97 x 87 cm | 34 x 97 x 112 cm |
| Clearance below ceiling..... | 43 cm | 43 cm |
| Net weight of unit..... | 38,5 kg | 41 kg |
| Lifting capacity..... | 45,5 kg | 45,5 kg |
| Travel time..... | 9 sec | 9 sec |
| Door's downward travel distance..... | 43 cm | 43 cm |
| Optional controls (SMALL and LARGE)..... | Wall switch, IR, RF | or RS232 codes |

* Without plenum: height 33 cm

