



Key Features

- Ergonomic design permits effortless, one-handed operation.
- Full color TFT LCD to display custom buttons, text, graphics and animations.
- Integrated high-resolution touchscreen.
- Thirty-five assignable/programmable keypad buttons.
- Three-way rocker switch for scrolling list navigation.
- Tilt switch can automatically turn on the backlight when picked up.
- Extremely bright, backlit display and keypad.
- Intuitive layout of keypad buttons for commonly used functions.
- Transmits IR and RF (or both - on a single button press!).
- Optional RF receiver allows you to transmit through walls, cabinets, etc.
- System includes a Lithium-Ion battery and docking station.
- Completely customizable, programmable and upgradable.
- Extremely wide IR transmitting frequency range.
- Optional 'Voltage' and 'Video' sensing modules to monitor power status of equipment when used with certain RTI processors.
- Optional interface for RS-232 controlled equipment when used with certain RTI processors.
- Non-volatile Flash memory stores your system configuration even when power is not present.
- Field upgradable firmware.
- USB Programming.

T2-C Universal Controller

Sleek and modern, the T2-C is the third generation of RTI's ground-breaking T2 remote control platform. Now updated with a state-of-the-art architecture including a full-color TFT LCD display, the remarkable T2-C Universal System Controller combines the power and flexibility of a fully customizable touchpanel with the convenience of 35 frequently used hard buttons. This design overcomes the need for any compromise between form, function, and technology. Innovations such as a three-way rocker switch for scrolling list navigation make the T2-C the most satisfying universal remote control you have ever used.

Description

The T2-C maintains the perfect balance between a color touchscreen and frequently used hard buttons. It is thinner, lighter, and has better ergonomics for one-handed operation than any product in its class. This design overcomes the need for compromise between form and function. Sleek and perfectly balanced, the T2-C is also infinitely flexible and expandable.

The T2-C takes complete control of the home theater, replacing all other remotes. It features a bright, high-contrast TFT LCD that can display custom buttons, text, graphics, and animations. In addition to the backlit display, there are 35 hard buttons that allow easy access to frequently used functions. Programming is easy and convenient thanks to the Windows® based Integration Designer™ software.

The T2-C is more than just a universal remote control - it's an expandable control system. When used with the available RTI accessory devices, the T2-C is capable of RF transmission through walls and cabinets, power sensing for reliable operation, and RS-232 communications for advanced control.

Call 952-253-3100

www.rticorp.com



It's Under Control®

Specifications

Power.....	3.6 VDC, 1200 mAh Lithium-Ion Battery Pack
Power Management.....	Automatic On/Off (tilt switch)
Infrared Control Range.....	30 feet (9.1 meters) @ 60 degrees
Infrared Frequency Transmission Range	15kHz - 460kHz
Radio Frequency Control Range	Up to 100 feet (30.5 meters)
.....	(with optional System Interfaces/Processors)
Radio Frequency Carrier	433 MHz
Operating Temperature	+32°F to +122°F (0°C to +50°C)
Operating Humidity.....	5% to 95% Non-condensing
Touchscreen Display.....	High-brightness color TFT LCD
.....	1/4 VGA (240x320 pixels) with 65K colors
.....	Integrated high-resolution touchscreen
Display Size	2.8 in (71mm) diagonal
Backlights	White LED (Display), Blue/Red/White LED (Keypad)
Nominal Run Time on Full Charge	2.5 hours minimum, continuous use
.....	(5 to 7 days on average use)
Standby Time on Full Charge	30 Days
Battery Charge Time	3-4 Hours
Total System Memory.....	16M Bytes Flash (non-volatile) memory
Device Capability.....	Total number of devices is limited only by memory
Macro Capability.....	Unlimited steps in a single macro
.....	Total number of macros is limited only by memory
.....	Macro capability on every button
Communications.....	USB programming port
Dimensions (L x W x D).....	10.0" (254mm) x 2.6" (66mm) x 1.0" (25mm)
Enclosure.....	High-impact molded ABS plastic
Weight	9.6 oz. (272g) with battery pack
Warranty.....	One Year (Parts & Labor) / 90 days on the battery

All specifications subject to change without notice



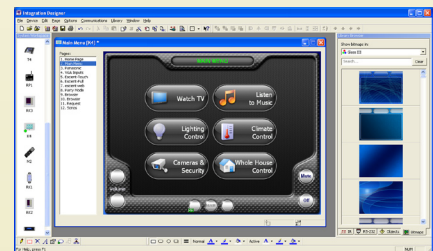
Accessories

RP-1	Remote Control Processor
RP-6	Remote Control Processor
MRP-64	Multi-Room Control Processor
XP-8	Advanced Control Processor
RM-433	RF Receiver
RCM-12	Relay Control Module
ECB-5	IR Emitter Connecting Block
CM-232	RS-232 Communication Module
VPS-1	Voltage Power Sensor
SPS-1	Video Sync Power Sensor



Other RTI Products

T1	Universal System Controller
T2+	Universal System Controller
M2	Universal System Controller
T2-Cs	Universal System Controller
T3-V	Universal System Controller
T4	Universal System Controller
U1	Waterproof Controller
U2	Waterproof Controller
RKM-1	In-Wall Multi-Room Audio Keypad
RK1	In-Wall Keypad Controller
RK2	In-Wall Touchscreen Controller
RK3	In-Wall Touchscreen Controller
K4	In-Wall Touchscreen Controller
IR-PRO	Infrared Capture System



Integration Designer™ Programming Software