



Key Features

- Dual RF transmission capability uses 433MHz and 2.4GHz (utilizing Zigbee® technology).
- Integrated 802.11b/g wireless Ethernet with improved performance.
- Two-way feedback from compatible devices using 2.4GHz (Zigbee®) and RTI control accessories.
- Blazing fast 533MHz CPU.
- Full VGA resolution (480x640) color TFT LCD to display custom buttons, text, graphics and animations.
- Integrated high-resolution touchscreen.
- Twenty-four programmable hard buttons, including five buttons with replaceable keycaps that can be custom engraved.
- Three-way rocker switch for scrolling list navigation.
- Ergonomic design permits effortless, one-handed operation.
- Tilt switch can automatically turn on the backlight when picked up.
- Extremely bright, backlit display and keypad.
- Transmits IR and RF (or both - on a single button press!).
- System includes a Lithium-Ion battery and docking station.
- Completely customizable and programmable.
- Extremely wide IR transmitting frequency range.
- Optional 'Voltage' and 'Video' sensing modules to monitor power status of equipment when used with RTI processors.
- Capable of two-way RS-232 control when used with certain RTI processors.
- Non-volatile Flash memory stores your system configuration even when power is not present.
- Field upgradable firmware.
- Fast USB 2.0 Programming.

T3-V+ Universal Controller

Representing the pinnacle of elegance, the T3-V+ is an extremely powerful controller wrapped in an easy-to-use, contemporary design. The third generation of the award-winning T3 system controller, the T3-V+ is enhanced with a state-of-the-art dual RF platform, improved WiFi® performance and updated hard button configuration. Experience the eye-popping color of the 3.5" full VGA touchscreen, offering a completely customizable user interface for intuitive command over the entire electronics system. Wireless Ethernet and a built-in web browser allow the user to access web pages and IP addressable devices such as security cameras. Like never before, the T3-V+ places powerful, stylish control in the palm of your hand.

Description

The T3-V+ is a powerhouse controller wrapped in a stylish, ergonomic design that redefines the role of the remote. Building on the original award-winning T3 concept, updated features such as revolutionary dual RF transmission plus wireless Ethernet provide the user with amazing control options. Designed to satisfy the most discriminating user, the T3-V+ delights the eye with custom graphics and web pages that come to life in sizzling color and clarity with a full VGA resolution, high contrast LCD display. Even with all this, "easy to use" is still the goal, and an assortment of hard buttons provides tactile feel and control of commonly used functions, including a three-way rocker switch for scrolling list navigation.

Extending control capabilities to new heights, the T3-V+ uses a cutting-edge dual RF platform, insuring installation flexibility and reliability. When used with compatible RTI control devices, the T3-V+ can utilize both 433MHz RF for one-way control and 2.4GHz Zigbee® for bi-directional communication from electronics such as music servers, lighting and even web-based RSS feeds for convenient weather updates, etc. Other key features include the integrated 802.11b/g wireless Ethernet and a built-in web browser allow the user to access web pages and IP video from security cameras, etc. All of these features can be enjoyed over longer periods of time thanks to the the large capacity rechargeable battery supplied with the T3-V+.

Call 952-253-3100

www.rticorp.com



It's Under Control®

Specifications

Power.....	3.6 VDC, 1700 mAh Lithium-Ion Battery Pack
Power Management.....	Automatic On/Off (tilt switch)
Infrared Control Range.....	30 feet (9.1 meters) @ 60 degrees
Infrared Frequency Transmission Range.....	15kHz - 460kHz
Radio Frequency Control Range.....	Up to 100 feet (30.5 meters)
.....	(with optional System Interfaces/Processors)
Radio Frequency Carrier.....	802.15.4 @ 2.4GHz (Zigbee® Wireless Mesh Networking)
.....	433 MHz
Wireless Ethernet.....	802.11b/g @ 2.4Ghz
Operating Temperature.....	+32°F to +122°F (0°C to +50°C)
Operating Humidity.....	5% to 95% Non-condensing
Touchscreen Display.....	High-brightness color TFT LCD
.....	Full VGA (480x640 pixels) with 65K colors
.....	Integrated high-resolution touchscreen
Display Size.....	3.5 in (89mm) diagonal
Backlights.....	White LED (Display), Blue/Red/White LED (Keypad)
Nominal Run Time on Full Charge.....	3.5 hours minimum, continuous use
.....	(5 to 7 days on average use)
Standby Time on Full Charge.....	30 Days
Battery Charge Time.....	3-4 Hours
Total System Memory.....	128M Bytes Flash (non-volatile) memory
Device Capability.....	Total number of devices is limited only by memory
Macro Capability.....	Unlimited steps in a single macro
.....	Total number of macros is limited only by memory
.....	Macro capability on every button
Communications.....	USB 2.0 programming port
Dimensions (L x W x D).....	7.6 in (193mm) x 3.1 in (79mm) x 1.1 in (28mm)
Enclosure.....	High-impact molded ABS plastic
Weight.....	7.4 oz. (210g) with battery pack
Warranty.....	One Year (Parts & Labor) / 90 days on the battery

All specifications subject to change without notice

* Two-way feedback available only when used with RTI control components.



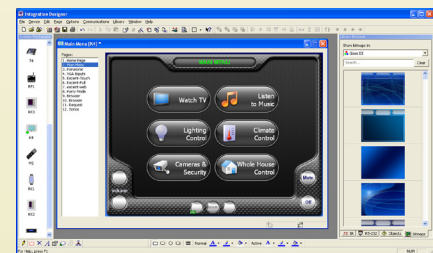
Accessories

RP-1	Remote Control Processor
ZRP-6	Remote Control Processor
MRP-64	Multi-Room Control Processor
XP-3	Advanced Control Processor
XP-6	Advanced Control Processor
XP-8	Advanced Control Processor
RM-433	433MHz RF Antenna
ZM-24	2.4GHz RF Transceiver Module
RCM-12	Relay Control Module
ECB-5	IR Emitter Connecting Block
viRsa Mouse	IR Emitter



Other RTI Products

T1-B	Universal System Controller
M2	Universal System Controller
T2-B	Universal System Controller
T2-Cs	Universal System Controller
T2-C+	Universal System Controller
T4	Universal System Controller
ST-7	Universal System Controller
U1	Weather Resistant Controller
U2	Weather Resistant Controller
RKM-1	In-Wall Multi-Room Audio Keypad
RK1	In-Wall Keypad Controller
RK2	In-Wall Touchscreen Controller
RK3-V	In-Wall Touchscreen Controller
K4	In-Wall Touchscreen Controller
RK-10	In-wall Touchscreen Controller



Integration Designer® Programming Software

5775 12th Avenue East, Suite 180, Shakopee, MN 55379
PH: (952) 253-3100 • Website: www.rticorp.com

RTI
It's Under Control®