



DISplay Studio

Content Creation with Page Editor & API Editor
Content Distribution & Scheduling with DISplay Server



DISplaystudio
Content Creation and Distribution Software

isplaystudio

Page Editor Features

User friendly (WhatYouSeelsWhatYouGet)

- make a very attractive presentation (transitions effects, text tickers, video overlay, etc.)
- video mode presets for all current resolutions/screens (landscape & portrait)
- sharing content between several users
- drag and drop function
- project bar with drag & drop function into the editor
- gridfunction

Multimedia content

- MPEG format
- Adobe® Flash® (swf, flv)
- merge video format with one or more flash
- multi layer definition (overlay)
- TV and streaming video support (RTSP, UDP, etc.)

External databases

- support for SQL®, Oracle®, XLS, MDB, CSV, TXT, etc.
- SQL filtering on databases on time/date/format/records
- eg Microsoft® Exchange® integration

Interactivity via Adobe® Flash®

Freeware for the users

Technology has radically changed our way of communicating. dZine is committed to deliver stable, efficient and trustworthy Digital Signage solutions. Therefore, dZine developed a unique software platform.

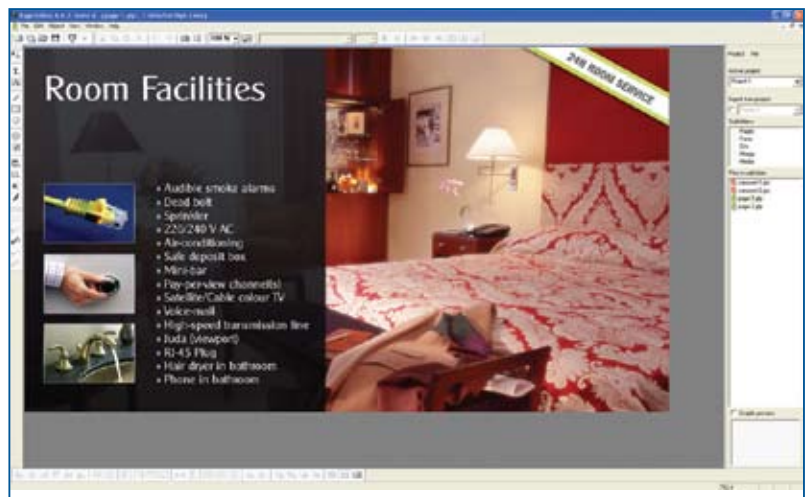
The dZine developed and composed DISplay Studio suite, consisting out of Page Editor, API Editor and DISplay Server, allows you to create your own attractive and dynamic content in a professional way. The easy-to-use DISplay Server software allows you distributing the information to the display.

This platform can be used for small (< 5 displays) as well as for large (>1000 displays) installations. The software allows running different contents automatically while the customer can keep full control over the different playlists at any time.

dZine's Display Studio suite runs on every Microsoft® OS Windows® compatible computer. A wide variety of multimedia like automatic webfeeds, flash, video, images, text etc. is supported by dZine's software package.

1 Content Creation - Page Editor

Page Editor allows you to create your own content, which will be displayed at the end. This dZine software offers you all the necessary tools to create attractive and dynamic content for your display information system; from basic texts and images to videos and flash objects.



Even pages in full HD resolution can be created. Page Editor allows the user to drag and drop files anywhere from the computer and with the grid function objects can easily be positioned in the canvas.

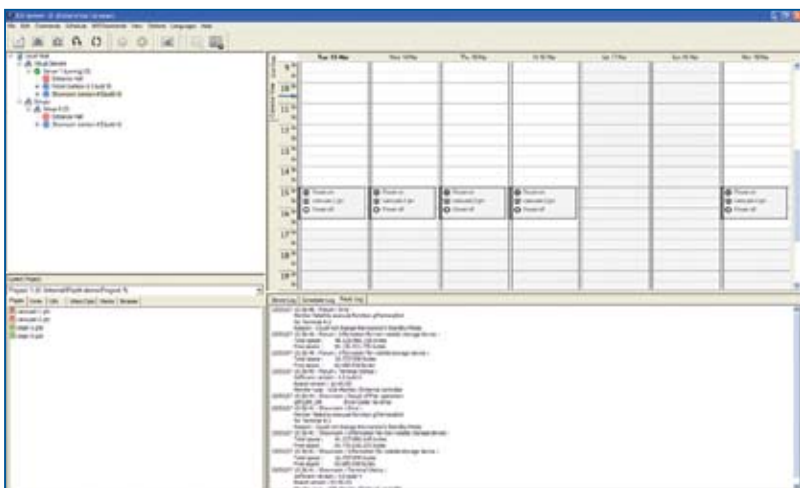
Furthermore, Page Editor allows you linking objects with any database enabling real-time updates on your displays. Page Editor allows sharing the multimedia source components to create the pages amongst different people working on the same playlist.

Page Editor is based on a 'What you see is what you get' user interface. Creating and modifying ad hoc messages on the fly and adding transition effects to playlists is easy to do with Page Editor.

MPEG video formats for information display systems are supported and different flashes can be played together. Page Editor even supports TV and streaming video. Links with external content databases like SQL®, Oracle®, XLS, CSV, TXT, etc. is possible and also record filtering is included. dZine's Page Editor is freeware for its users.

2 Content Distribution & Scheduling - DISplay Server

With DISplay Server you can manage your DISplayers in an easy and intuitive way. With DISplay Server you can schedule content on individual screens or groups of screens, all being remotely managed from one application. Remote management can be set up from a single or multiple point of management, each assigned with different administrator profiles.



Multi-user management is an additional benefit at the DISplay Server. Multiple users can log in on the system while each user obtains its own rights and thus, has selected or full access to the information.

You can send pages, switching the displays on/off, performing updates and many more. All actions can be done manually or automated with the built-in scheduler.

Further on, content can be modified and directly send to the DISplayer and thus directly imaged on the DISplayer. The DISplayer provides full logging of all played content for billing purposes, logging of network communication between server and DISplayer for service reasons.

The players can be controlled at a distance, so content can be adjusted at any time and at almost any place and on top of that content can be shared between several users.

The system detects when a file is out of date and DISplay Server will automatically send new files to the DISplayer. It even gives you feedback about the played objects and it regularly takes screenshots of what is playing. Every screen can be controlled from one server application and screens can be grouped or sub grouped.

DISplay Server Features

User friendly

- supports plasma, TFT, projectors, LED, etc.
- Microsoft® Outlook® Agenda look-alike for scheduling
- drag and drop via internet explorer, windows explorer, etc.
- sharing content between several users

Optimized communication to minimize the network load

- out-of date function (smart update technology for content residing on players)

Monitoring

- screen dump (to see what's running on the screen)
- SNMP monitoring

Display management

- grouping & sub grouping of screens
- every screen can be controlled from 1 server application

Project Support

- link and auto update with external content databases
- several *Virtual Servers* running at the same time
- runs as a service + remote login possible
- user rights-management

